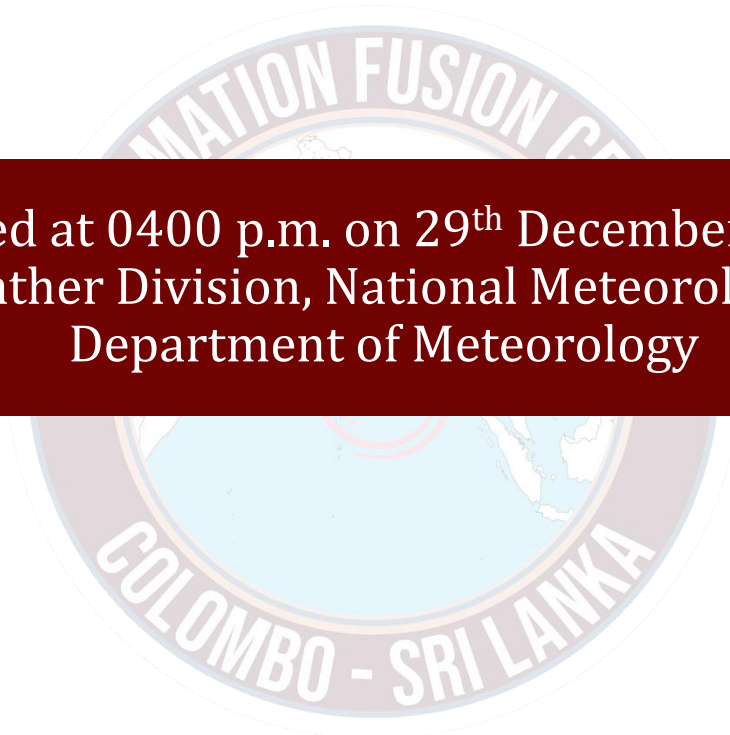




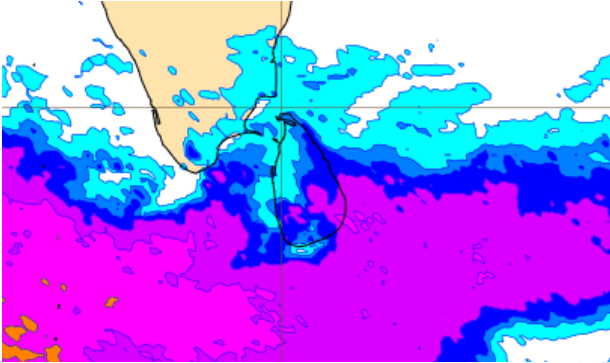
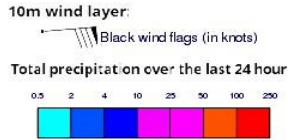
INFORMATION FUSION CENTRE COLOMBO

08 DAYS FORECAST FOR COASTAL AREAS AROUND SRI LANKA

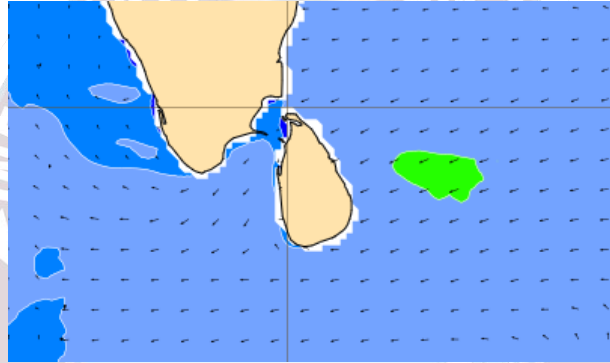
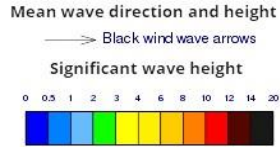


Issued at 0400 p.m. on 29th December 2023
Marine Weather Division, National Meteorological Centre
Department of Meteorology

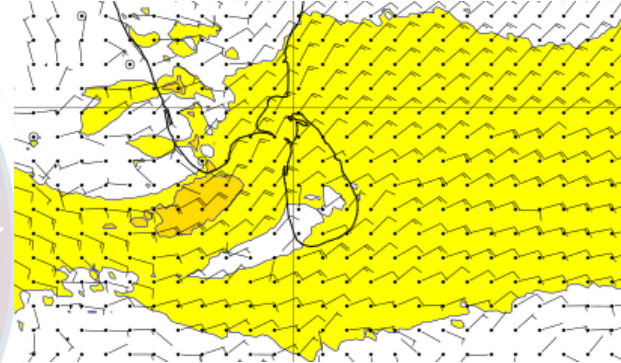
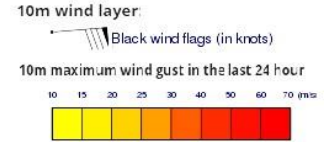
Wind and Rainfall Forecast (Total precipitation for 24 hrs)



Significant wave height (in meters)



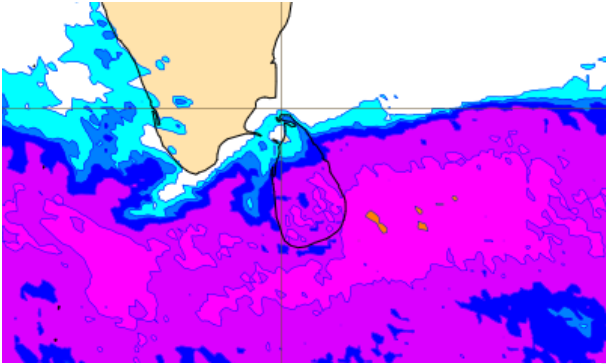
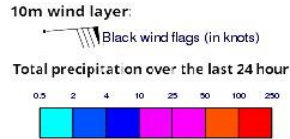
Wind Gust (m/s)



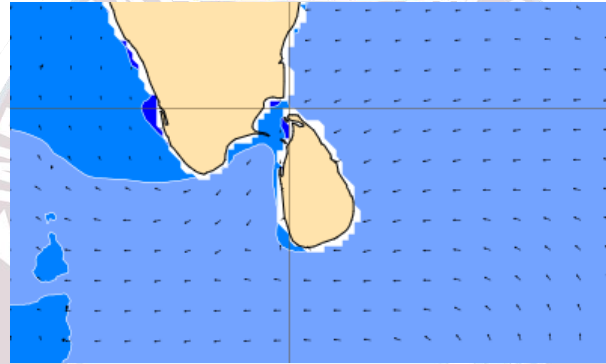
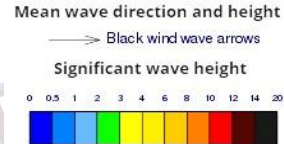
Showers or thundershowers will occur at several places in the sea areas extending from Galle to Batticaloa via Hambantota. Showers or thundershowers will occur at a few places in the other sea areas around the island.

Wind speed will be 25-35 kmph in the sea areas around the island. Wind speed can increase up to 50-55 kmph at times and the sea condition will be rough at times in the sea areas around the island.

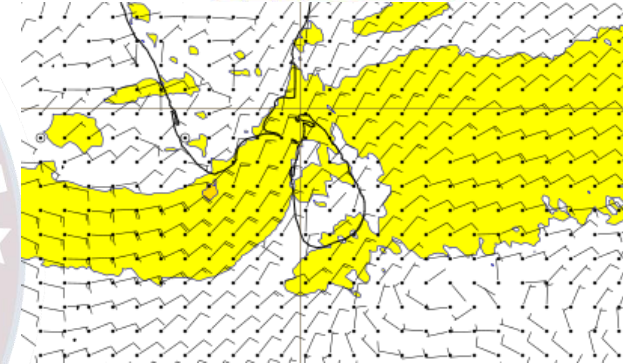
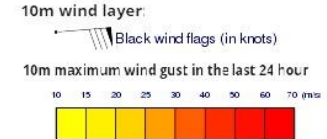
Wind and Rainfall Forecast (Total precipitation for 24 hrs)



Significant wave height (in meters)



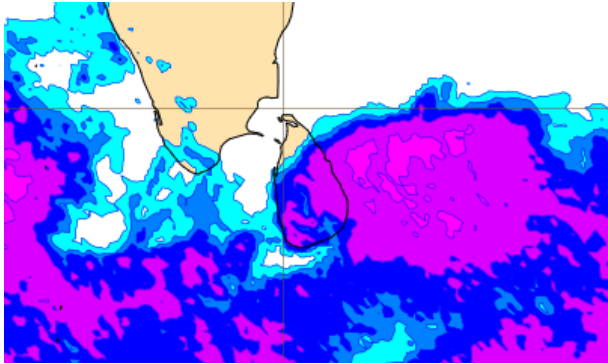
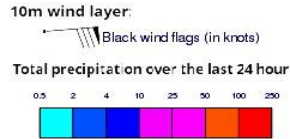
Wind Gust (m/s)



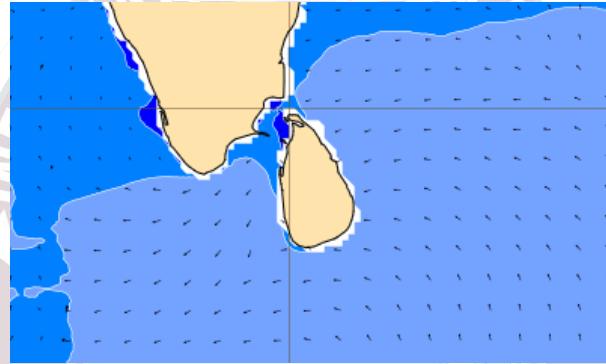
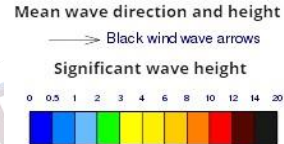
Showers or thundershowers will occur at times in the sea areas extending from Colombo to Trincomalee via Galle, Hambantota and Batticaloa. Showers or thundershowers will occur at a few places in the other sea areas around the island.

Wind speed will be 20-30 kmph in the sea areas around the island. Wind speed can increase up to 40-50 kmph at times and the sea condition will be rough at times in the sea areas off the coast extending from Colombo to Trincomalee via Puttalam, Mannar and Kankasanturai, and also from Matara to Hambantota.

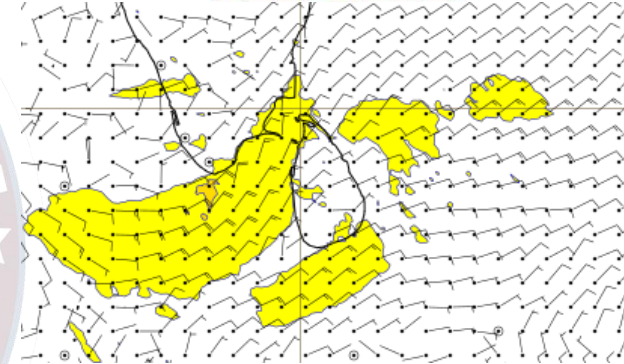
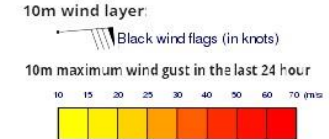
Wind and Rainfall Forecast (Total precipitation for 24 hrs)



Significant wave height (in meters)



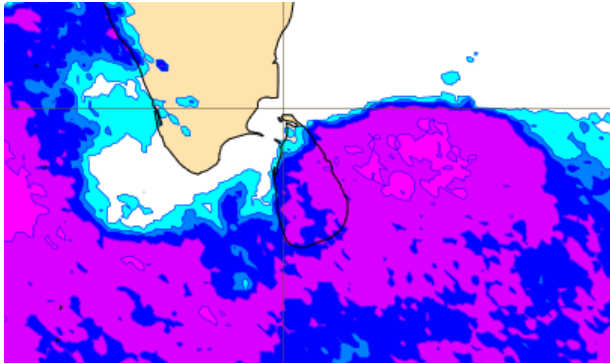
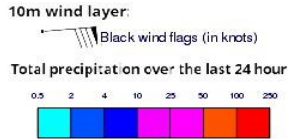
Wind Gust (m/s)



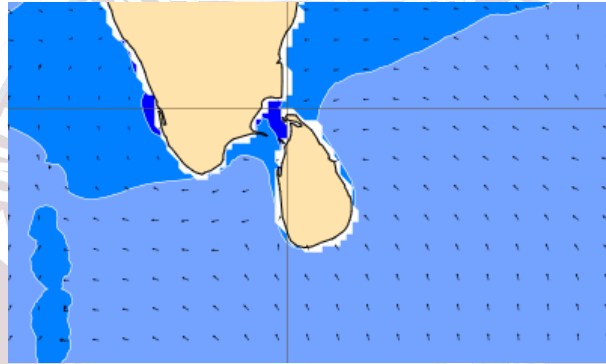
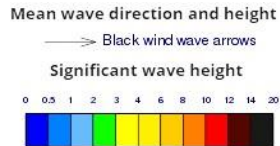
Showers or thundershowers will occur at several places in the sea areas extending from Pottuvil to Trincomalee via Batticaloa. Showers or thundershowers will occur at a few places in the sea areas extending from Colombo to Pottuvil via Galle and Hambantota.

Wind speed will be 20-30 kmph in the sea areas around the island. Wind speed can increase up to 40-50 kmph at times and the sea condition will be rough at times in the sea areas off the coast extending from Colombo to Mullaitivu via, Puttalam, Mannar and Kankasanturai and also from Galle to Matara via Hambantota.

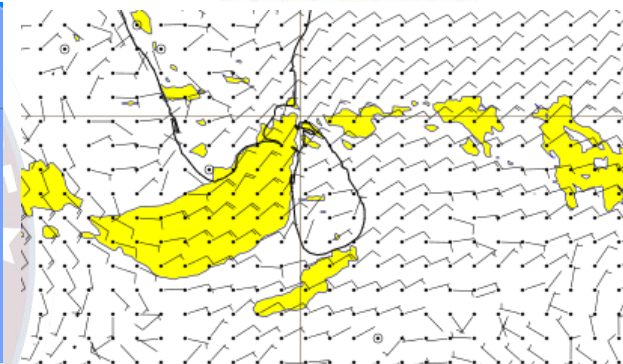
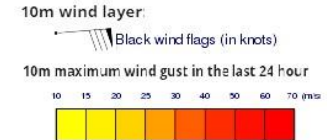
Wind and Rainfall Forecast (Total precipitation for 24 hrs)



Significant wave height (in meters)



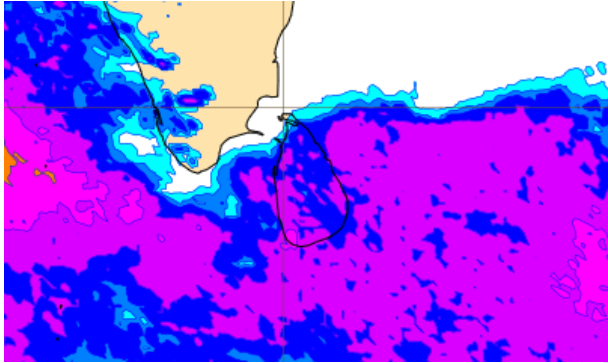
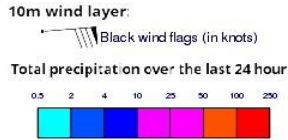
Wind Gust (m/s)



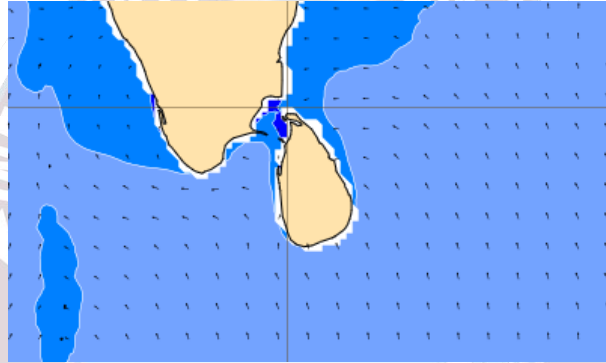
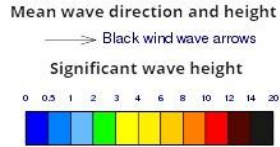
Showers or thundershowers will occur at several places in the sea areas extending from Galle to Pottuvil via Hambantota, Batticaloa and Trincomalee. Showers or thundershowers will occur at a few places in the sea areas extending from Puttalm to Galle via Colombo.

Wind speed will be 20-30 kmph in the sea areas around the island. Wind speed can increase up to 40-50 kmph at times and the sea condition will be rough at times in the sea areas off the coast extending from Colombo to Mullaitivu via, Puttalam, Mannar and Kankasanturai and also from Galle to Hambantota via Matara.

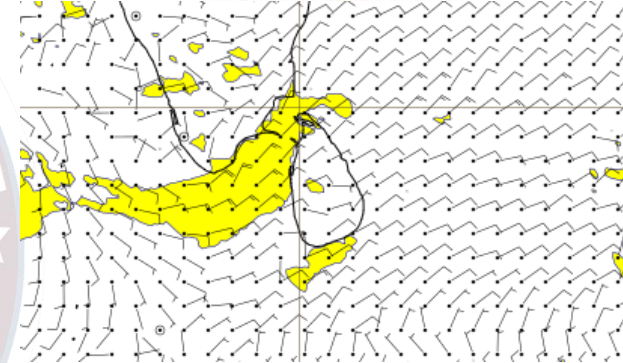
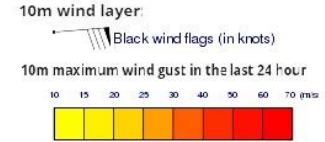
Wind and Rainfall Forecast (Total precipitation for 24 hrs)



Significant wave height (in meters)



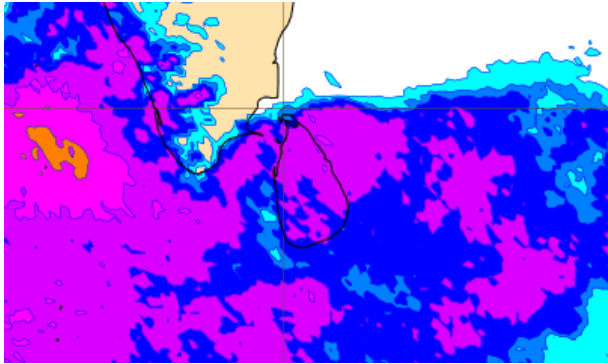
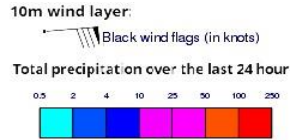
Wind Gust (m/s)



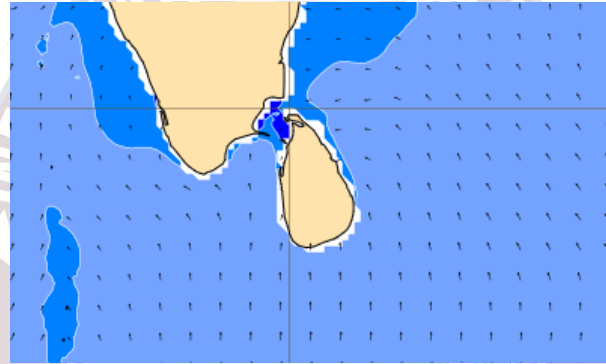
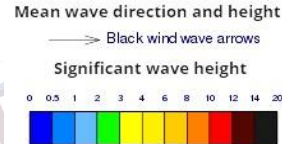
Showers or thundershowers will occur at a several places in the sea areas around the island.

Wind speed will be 20-30 kmph in the sea areas around the island. Wind speed can increase up to 40-50 kmph at times and the sea condition will be rough at times in the sea areas off the coast extending from Colombo to Kankasanturai, via Puttalam, Mannar and also from Galle to Matara.

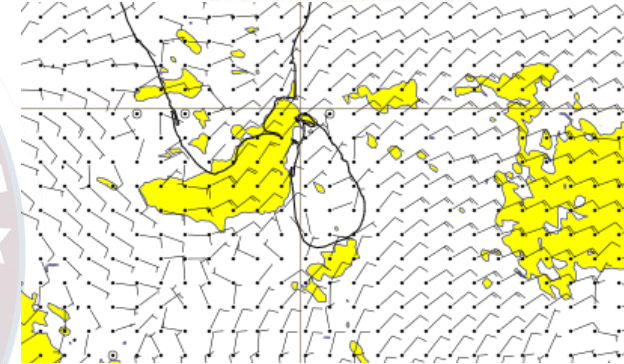
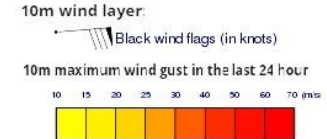
Wind and Rainfall Forecast (Total precipitation for 24 hrs)



Significant wave height (in meters)



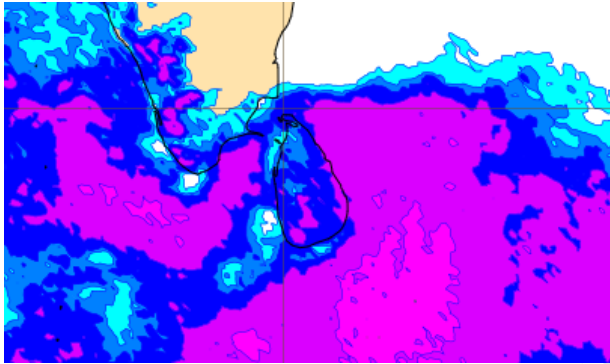
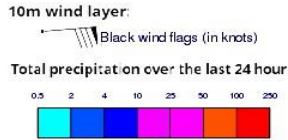
Wind Gust (m/s)



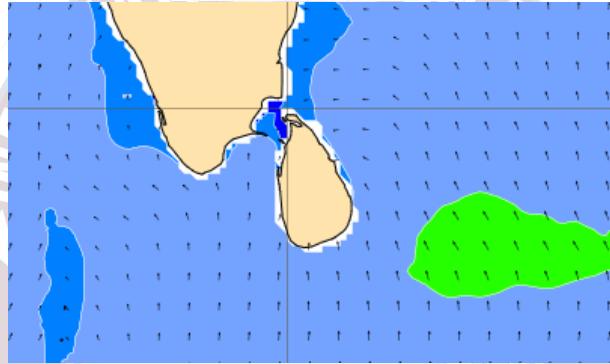
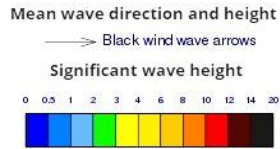
Showers or thundershowers will occur at a several places in the sea areas around the island.

Wind speed will be 20-30 kmph in the sea areas around the island. Wind speed can increase up to 40-50 kmph at times and the sea condition will be rough at times in the sea areas off the coast extending from Colombo to Kankasanturai, via Puttalam and Mannar and, also from Galle to Matara.

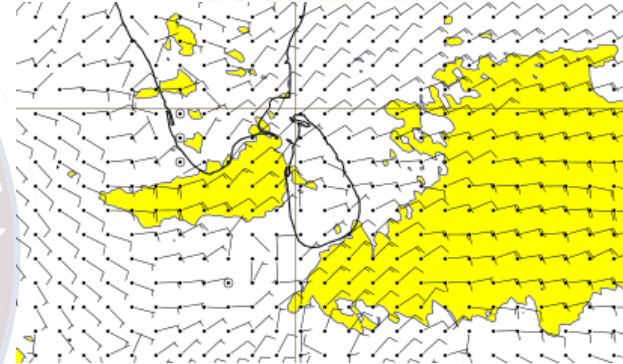
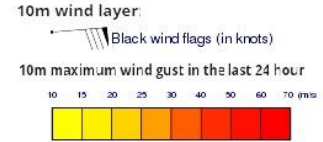
Wind and Rainfall Forecast (Total precipitation for 24 hrs)



Significant wave height (in meters)



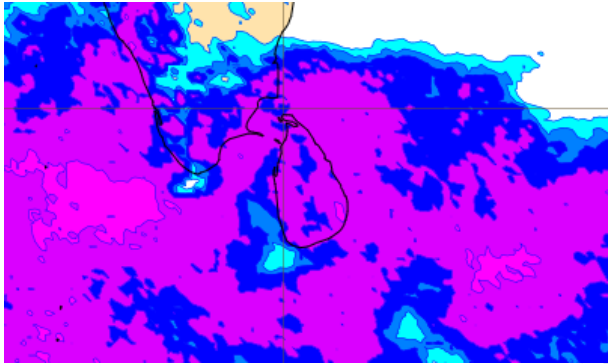
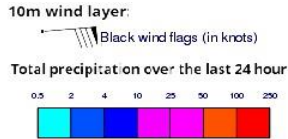
Wind Gust (m/s)



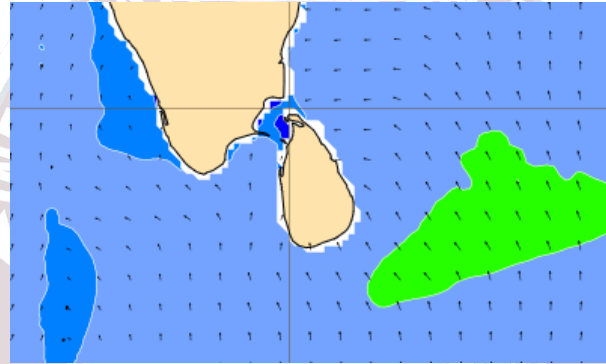
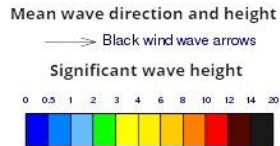
Showers or thundershowers will occur at a several places in the sea areas around the island.

Wind speed will be 20-30 kmph in the sea areas around the island. Wind speed can increase up to 40-50 kmph at times and the sea condition will be rough at times in the sea areas off the coast extending from Colombo to Kankasanturai, via Puttalam and Mannar and, also from Matara to Hambantota.

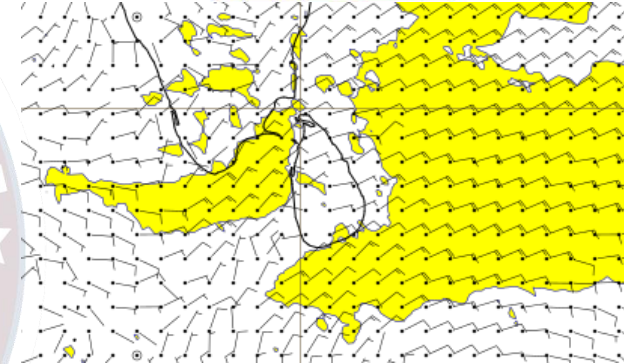
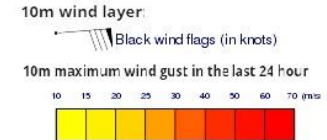
Wind and Rainfall Forecast (Total precipitation for 24 hrs)



Significant wave height (in meters)



Wind Gust (m/s)



Showers or thundershowers will occur at a several places in the sea areas around the island.

Wind speed will be 20-30 kmph in the sea areas around the island. Wind speed can increase up to 40-50 kmph at times and the sea condition will be rough at times in the sea areas off the coast extending from Colombo to Kankasanturai, via Puttalam and Mannar and also from Galle to Hambantota via Matara.



Thank you!